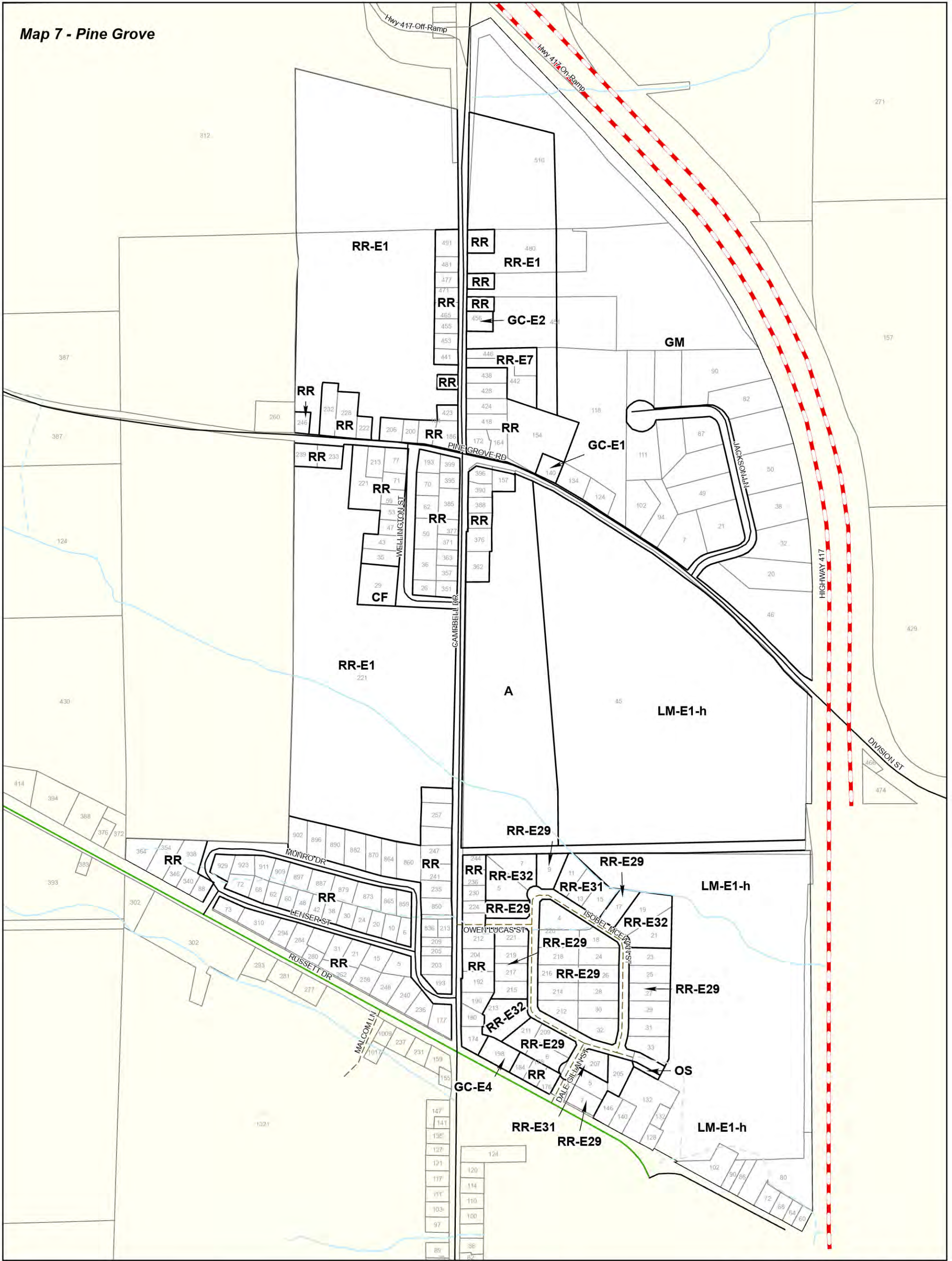


Map 7 - Pine Grove



- Waste Disposal Site- Active
- Waste Disposal Site- Inactive
- Trails
- TransCanada Pipeline
- Floodplain line
- Intermittent- Watercourse
- Permanent- Watercourse
- County Road
- Municipal Maintained Road
- Municipal Seasonal Road
- Private Road
- Provincial Highway
- A - Agriculture
- At Capacity Lake
- CF - Community Facility
- CL - Crown Land
- DM - Disposal Industrial
- EP - Environmental Protection
- EP-E1 - Provincially Significant Wetland (PSW)
- EP-E4 - Environmental Protection - Exception Four
- E - Exceptions (Numbered Consecutively for respective zone classification e.g., RU-E1, RU-E2, etc.)
- GC - General Commercial
- GM - General Industrial
- LM - Light Industrial
- OS - Open Space
- RU - Rural
- RR - Rural Residential
- Water
- Property Parcels

**Township of McNab/Braeside
Zoning By-law
Schedule 'A' Map 7
Pine Grove**
DRAFT WORKING COPY

March 26, 2025



**Corporation of The
Township of McNab/Braeside**
This is Schedule 'A' to the By-law Number _____
Passed the _____ day of _____ 20____.
Signatures of Signing Officers

Mayor

CAO/Clerk

Produced by: County of Renfrew Development and Property Department
9 International Drive Pembroke, Ontario K8A 6W5 © 2024, County of Renfrew

Sources: Base Data: With Data supplied under Licence by Members of the Ontario Geospatial Data Exchange & County of Renfrew
Projection: UTM NAD83 Zone 18

This map is illustrative only. Do not rely on it as being a precise indicator of routes, locations of features, nor as a guide to navigation. The County of Renfrew shall not be liable in any way for the use of, or reliance upon, this map or any information on this map.