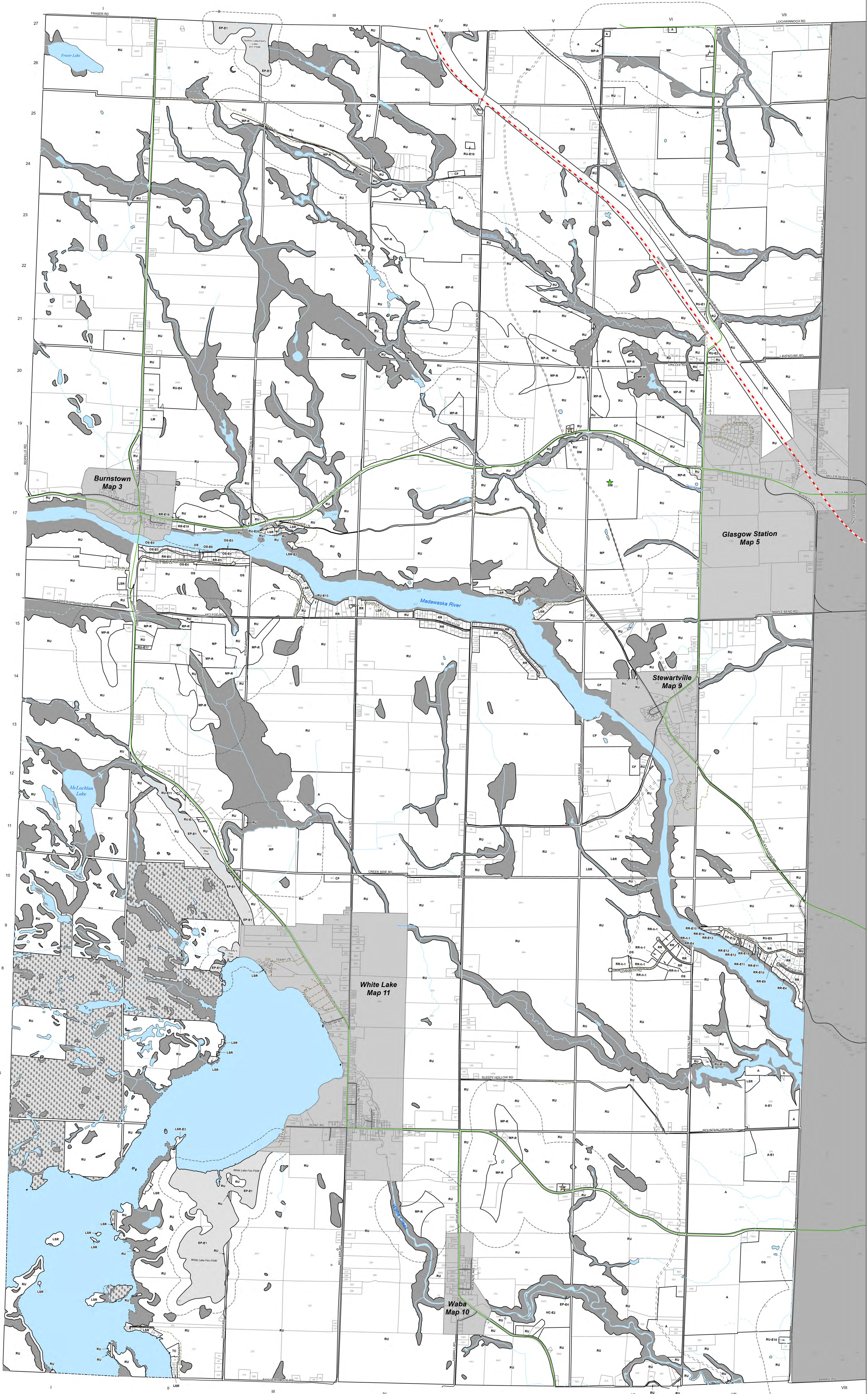


**Township of McNab/Braeside
Zoning By-law
Schedule 'A'
Map 1 - West Half**

DRAFT WORKING COPY
March 26, 2025

- ★ Waste Disposal Site - Active
 - ★ Waste Disposal Site - Inactive
 - TransCanada Pipeline
 - Trails
 - County Road
 - Municipal Maintained Road
 - Municipal Seasonal Road
 - Private Road
 - Provincial Highway
 - Intermittent- Watercourse
 - Permanent- Watercourse
 - Property Parcel
 - A - Agriculture
 - At Capacity Lake
 - CF - Community Facility
 - CL - Crown Land
 - DM - Disposal Industrial
 - EP - Environmental Protection
 - EP-E1 - Provincially Significant Wetland (PSW)
 - EP-E4 - Environmental Protection - Exception Four
 - - E - Exceptions
 - GC - General Commercial
 - GM - General Industrial
 - HC - Highway Commercial
 - LM - Light Industrial
 - LSR - Limited Service Residential
 - MP - Mineral Aggregate Pit
 - MP-R - Mineral Aggregate Pit-Reserve
 - MQ - Mineral Aggregate Quarry
 - MQ-R - Mineral Aggregate Quarry- Reserve
 - OS - Open Space
 - RU - Rural
 - RR - Rural Residential
 - TC - Tourism Commercial
 - Water
- Separation Distances**
- | Zone | Feature | Required Minimum |
|-------------|--|------------------|
| DM | Waste Disposal Site | 500 metres |
| EP-E1 | Provincially Significant Wetland (PSW) | 120 metres |
| EP-E2 | Area of Natural and Scientific Interest - Life Science (ANSI) | 120 metres |
| EP-E3 | Area of Natural and Scientific Interest - Earth Science (ANSI) | 50 metres |
| MP and MP-R | Sand and Gravel Resource and Licensed Pit | 300 metres |
| MQ and MQ-R | Bedrock Resource and Quarry | 500 metres |



**Corporation of the
Township of McNab/Braeside**

This is Schedule 'A' to the By-law Number _____
Passed the _____ day of _____, 20____.

Signatures of Signing Officers

Mayor

CAO/Clerk