

COUNTY OF RENFREW OFFICIAL PLAN SCHEDULE "A" - Map 1

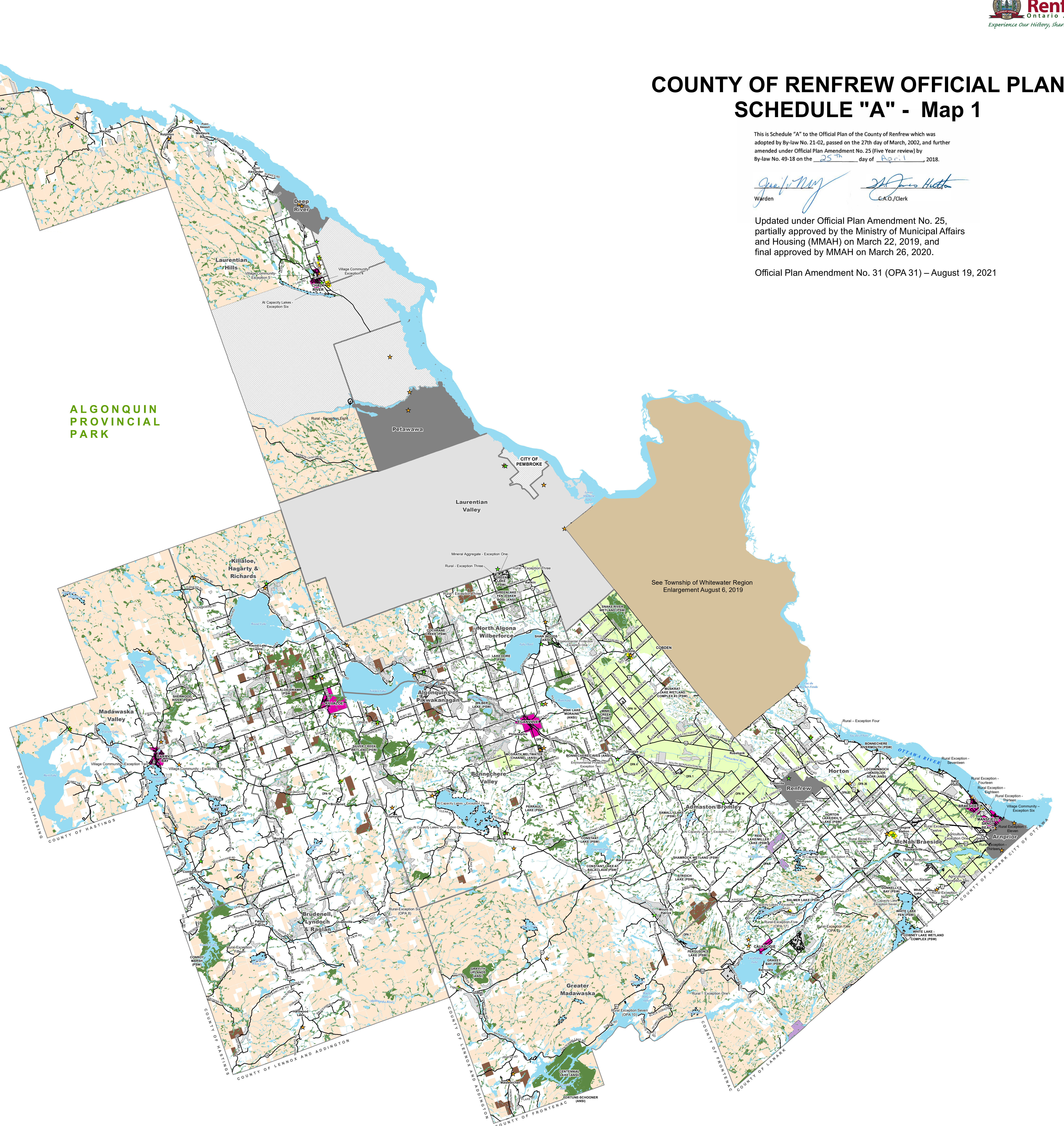
This is Schedule "A" to the Official Plan of the County of Renfrew which was adopted by By-law No. 21-02, passed on the 27th day of March, 2002, and further amended under Official Plan Amendment No. 25 (Five Year Review) by By-law No. 49-18 on the 25th day of April, 2018.

Janice May Warden
John Huth C.A.O./Clerk

Updated under Official Plan Amendment No. 25, partially approved by the Ministry of Municipal Affairs and Housing (MMAH) on March 22, 2019, and final approved by MMAH on March 26, 2020.

Official Plan Amendment No. 31 (OPA 31) – August 19, 2021

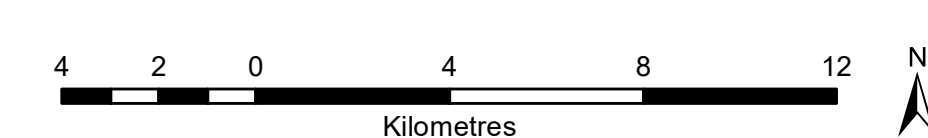
**ALGONQUIN
PROVINCIAL
PARK**



- Road
- Permanent Streams and Rivers
- Lakes and Rivers
- At Capacity Lakes
- Urban Community
- Village Community
- Non County Areas
- Special Policy Exception Areas
- Local Official Plan - Township of Laurentian Valley
- ★ Active Waste Disposal Site
- ★ Inactive Waste Disposal Site
- Environmental Protection Area
- Rural
- Crown Land
- County Forest
- Mineral Aggregate
- Mining Resource
- Agriculture

Please review in conjunction with Schedule B Maps

For more information please contact the County of Renfrew Planning Division at 613-735-7288 or by emailing info@countyofrenfrew.on.ca



DATE OF CONSOLIDATION
OPA 25 – March 26, 2020
OPA 17 – December 3, 2020
OPA 31 – August 19, 2021

Produced by: County of Renfrew, Development and Property Department, Information Services
Renfrew, Ontario, Canada
Source: Best Available Data. This map is published under the authority of the Ontario Open Access Information Act.
August 19, 2021
© 2021 County of Renfrew